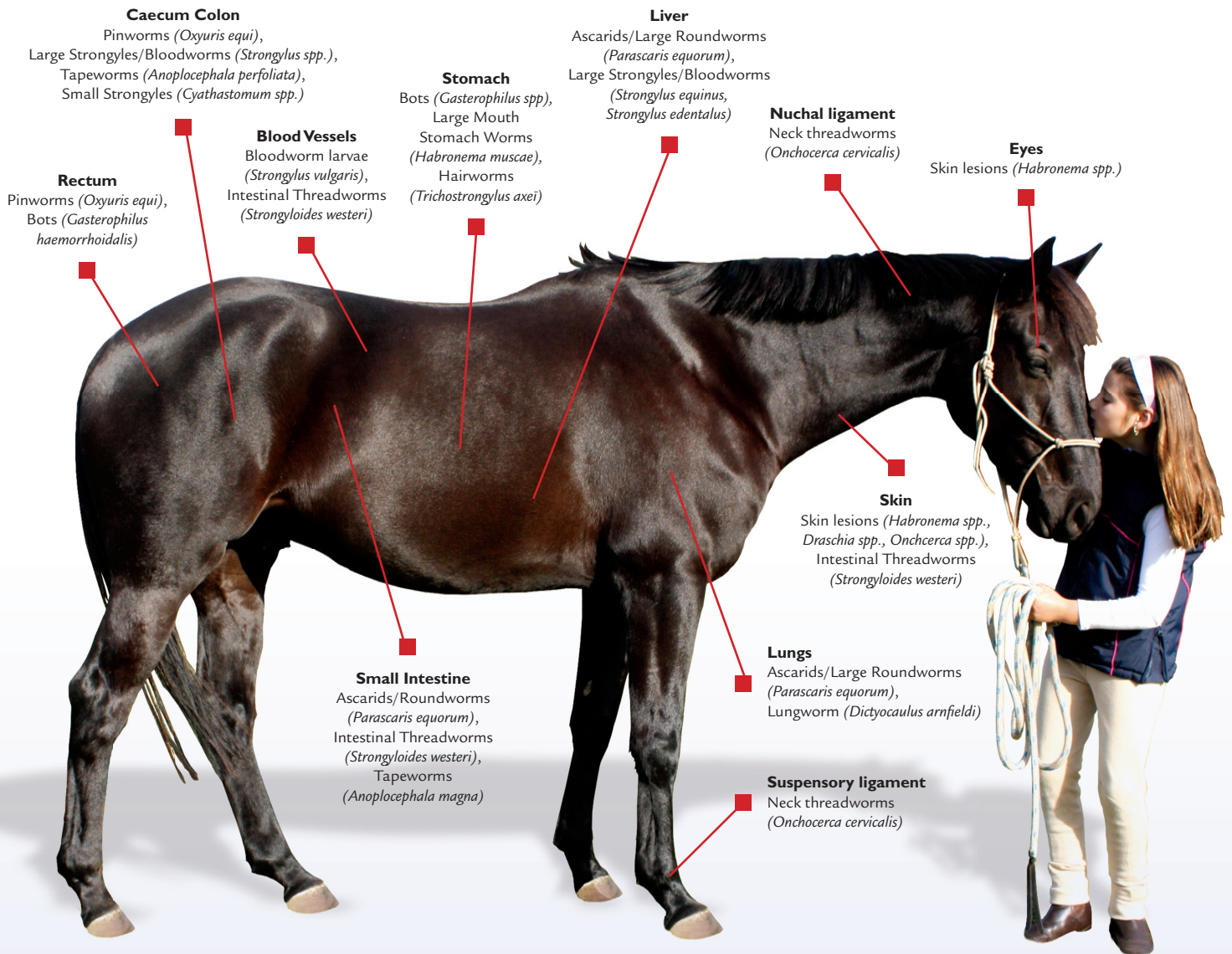


Know your worms

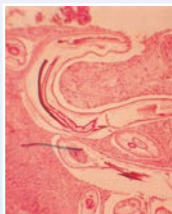
Anatomical location of main internal parasites in horses.



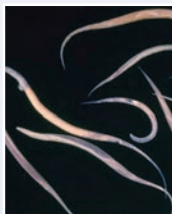
Tapeworm
(*Anoplocephala perfoliata*)



Ascarids/Large Roundworms
(*Parascaris equorum*)



Small Strongyles
(*Cyathostomum spp.*)



Pinworms
(*Oxyuris equi*)



Large Strongyles/
Bloodworms
(*Strongylus spp.*)



Bots
(*Gasterophilus spp.*)



Large Strongyles/
Bloodworms
(*Strongylus spp.*)



Lungworms
(*Dictyocaulus arnfieldi*)